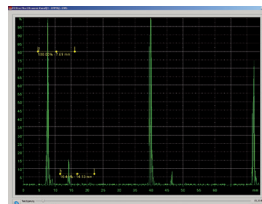


PROLINE



Mobile inspection systems (immersion-technique)

for the inspection of welded gear wheels – PROline Mobile I



- Space saving installation
- Easy operation
- Fast evaluation
- Standard design
- Inspection of multiple gear wheel sizes possible



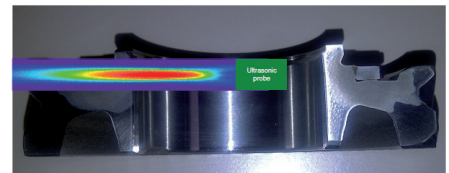
Mobile inspection system – PROline Mobile I (immersion-technique)

Manual loading and unloading, manual inspection start and automatic end as well automatic evaluation of the inspection results.

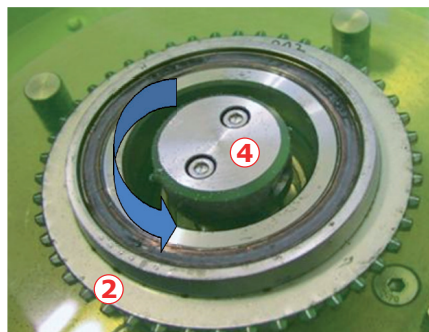
Inspection procedure:

- The operator puts the adapter **③** for the gear wheel **②** into the immersion tank **①**
- The operator puts the gear wheel onto the adapter in the immersion tank
- The operator starts the inspection process via push button
- During inspection the gear wheel **②** rotates 360° around the probe **④** and the weld seam is automatically inspected
- At the end of inspection the rotation automatically stops, the inspection result is shown by the signal lamps **⑤** (OK or not OK) and if requested can be displayed on the monitor of the customer`s PC. The operator removes the gear wheel and the inspection procedure can begin again.

The mobile ultrasonic inspection system consists of a stainless steel water tank, inverter controlled AC drive for the rotation, operator box **⑥**, PROline^{USB} hardware and PROline^{PLUS} application software.
Options: PC with monitor



Cross section view of the gear wheel with probe beam.



VOGT Ultrasonics GmbH
Ehlbeek 15
30938 Burgwedel
GERMANY

Tel. +49 (0) 5139-9815-0
Fax +49 (0) 5139-9815-99
info@vogt-ultrasonics.de
www.vogt-ultrasonics.de



- accredited acc. to DIN EN ISO / IEC 17025:2005
- certified acc. to ISO 9001:2008 / EN 9100:2009